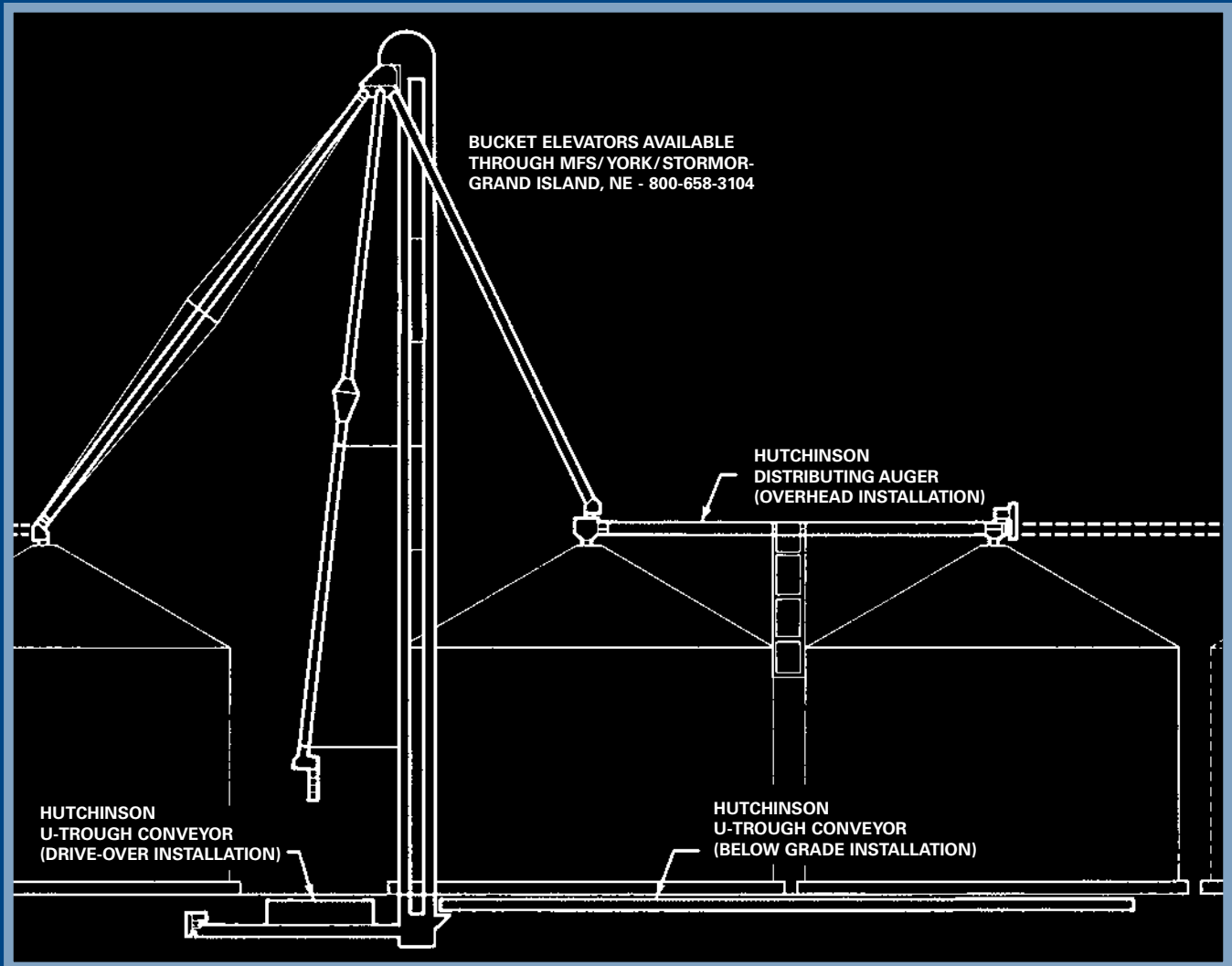




# DISTRIBUTING AUGERS

---

# U-TROUGH CONVEYORS



*Everything needed to make your grain handling system complete!*

*Complimented by Comparison®*



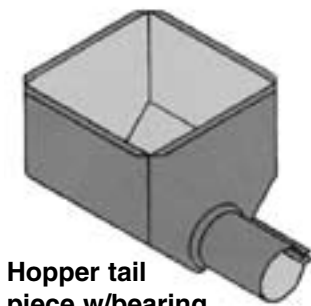
# Grain Handling System Components

## Custom Built Distributing Augers

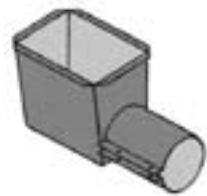
- Custom built augers are available in any length to over 100 ft.
- Drives include reducer or direct belt. Drive options include oil bath chain, gear or straight belt.
- Standard head components are available in 11' and 21' lengths.
- Standard extensions are available in 5', 10', 15' and 20' lengths.
- Galvanized tube and many components for longer wear and weather resistance.

## Custom Built Distributing Auger Accessories

- Available in 6", 8", 10" or 12" diameter. Selected items available in 14".



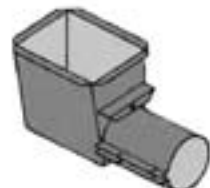
Hopper tail piece w/bearing and cover



Hopper tail piece w/bearing and cover



Hopper tail piece w/enclosed slide gate



Hopper tail piece w/bearing and slide inlet



Inlet hopper w/cover



End plate w/bearing



Reduced pitch flight



Internal bearing

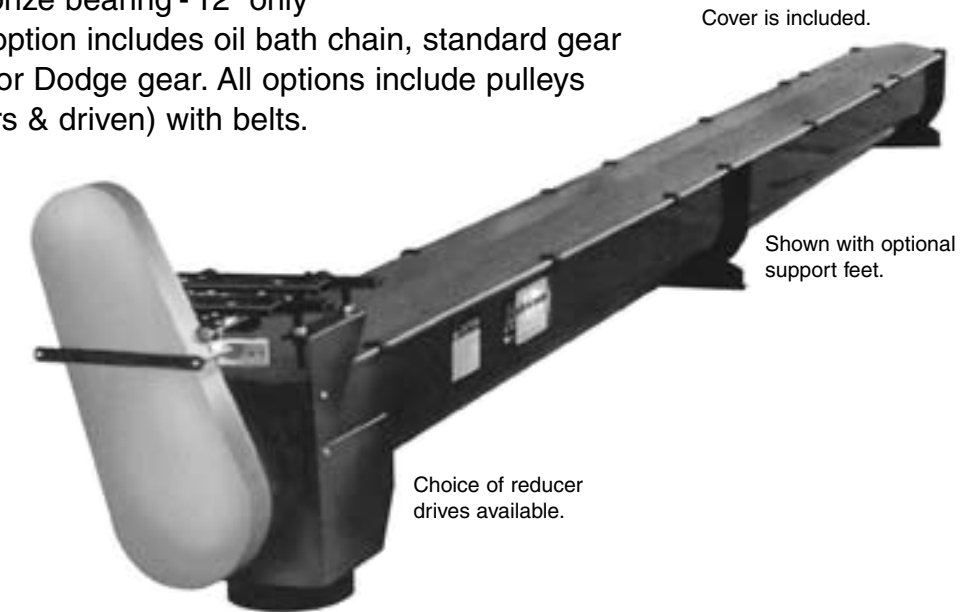
### SPECIFICATIONS

MODEL	SIZE	DIA.	HOUSING GAUGE	FLIGHT O.D.	FLIGHT GAUGE	FLIGHT SHAFT	FLIGHT CONNECTING STUB
H1603A	*	6"	16 ga.	5"	11 ga.	1 1/4"	1"
H1603M	*	6"	16 ga.	5"	7 ga.	1 1/4"	1"
H1603H	*	6"	16 ga.	5"	7 ga.	1.9"	1"
H1803G	*	8"	14 ga.	7"	7 ga.	1.9"	1 1/4"
H1803H	*	8"	14 ga.	7"	1/4"	1.9"	1 1/4"
H2003A	*	10"	12 ga.	9"	7 ga.	2 3/8"	1 1/2"
H2003H	*	10"	12 ga.	9"	1/4"	2 3/8"	1 1/2"
H2203A	*	12"	12 ga.	11"	7 ga.	2 7/8"	2"
H2203M	*	12"	12 ga.	11"	1/4"	2 7/8"	2"
H2203H	*	12"	12 ga.	11"	3/8"	2 7/8"	2"
H2403A	*	14"	12 ga.	12 1/2"	1/4"	3 1/2"	2"
H2403H	*	14"	12 ga.	12 1/2"	3/8"	3 1/2"	2"

\*May be ordered in any length (price per foot).

## Custom Built U-Trough Conveyors

- Available in 9" and 12" diameter sizes
- Capacities 500 - 8,331 BPH
- Pre-assembled: flight and bearings are installed for easy field installation
- Choice of hanger bearings
  - Nylon or wood - 9" and 12"
  - Bronze bearing - 12" only
- Drive option includes oil bath chain, standard gear case, or Dodge gear. All options include pulleys (motors & driven) with belts.



Cover is included.

Shown with optional support feet.

Choice of reducer drives available.

Shown with optional 90° spout.

## Custom Built U-Trough Conveyor Accessories

- End flanges
- Inlet hopper with cover
- Support foot
- Inlet slide gate for under-bin use
- Drops with enclosed slide gate
- Pit hopper and pit hopper grating

### SPECIFICATIONS

MODEL	DIA.	STD. LENGTH	GAUGE OF U-TROUGH	FLIGHT O.D.	FLIGHT STRIP	FLIGHT SHAFT	TAIL AND BEARING STUB
J3100A*	9"	5' & 10'	14 ga.	9"	3/16"	2 3/8"	1 1/2"
J3100B*	9"	5' & 10'	14 ga.	9"	3/8"	2 3/8"	1 1/2"
J3200A*	12"	6' & 12'	12 ga.	12"	1/4"	2 7/8"	2"
J3200B*	12"	6' & 12'	12 ga.	12"	3/8"	2 7/8"	2"

\*May be ordered in any length (price in standard length increments).



90° spout



45° spout



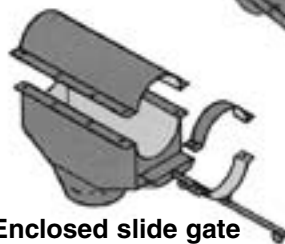
Two-way valve



"K" valve



Three-way valve



Enclosed slide gate (Shown with optional cable and pulley control.)



Mounting bracket

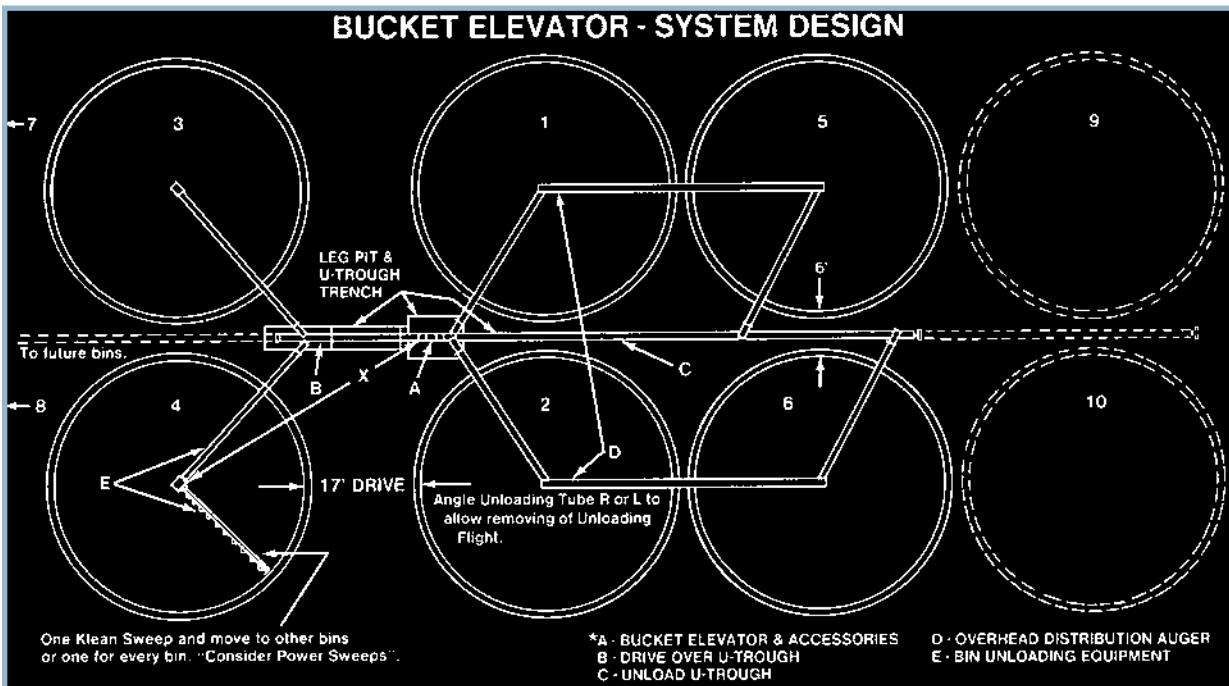
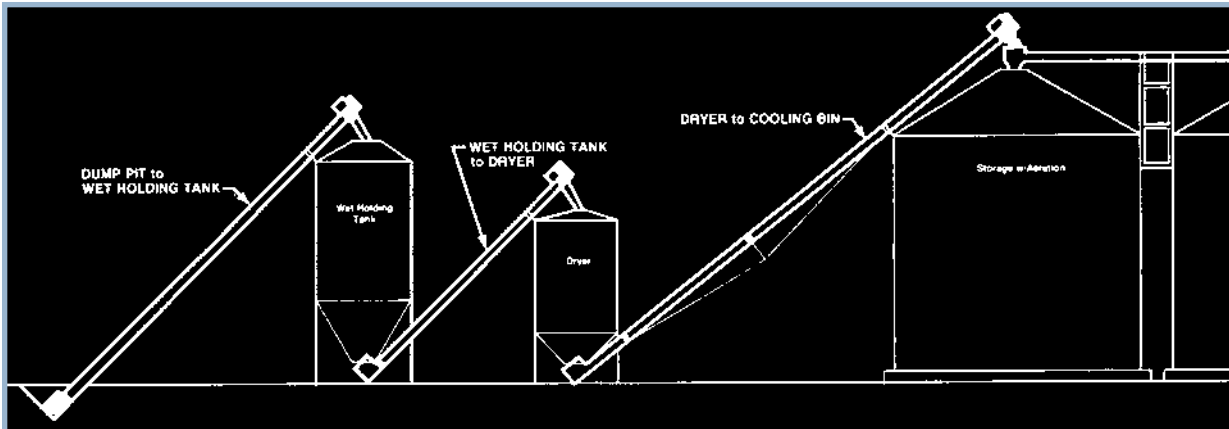


Rack and pinion control

# Hutchinson...your partner in grain handling system design!

Planning with the future in mind is the key to profitable and trouble-free grain handling. Whether you are considering a single or multiple bin installation it is to your advantage to have a site plan, preferably a drawing that details both present equipment and future requirements. For example: number and size of bins (existing shown in solid line and future in dotted lines); spacing between bins to accommodate distribution augers; height to top of bins for

installation of cross conveyors; and directional attitude of bins to insure proper angle and alignment of unloading augers. Other things to consider in planning are: capacity requirements of conveyer systems; location of unloading wells and tubes; aeration ducts; and bucket elevator system. A well-designed site plan can save you costly rework as your operation expands. If you need assistance in planning your system, contact Hutchinson or the dealer shown below.



\*Bucket Elevators available through MFS/York/Stormor-Grand Island, NE-800-658-3104



**HUTCHINSON**

Box 629 • Clay Center, Kansas 67432  
FAX 785-632-5964

Call Toll-Free 1-800-523-6993 • (785) 632-2161  
www.hutchweb.com

### Other Hutchinson products:

- Portable Augers
- Utility Augers
- Bin Unloading Equipment
- En Masse Conveyors:
  - Grain Pump
  - Mass-ter Mover

### Distributed by: